

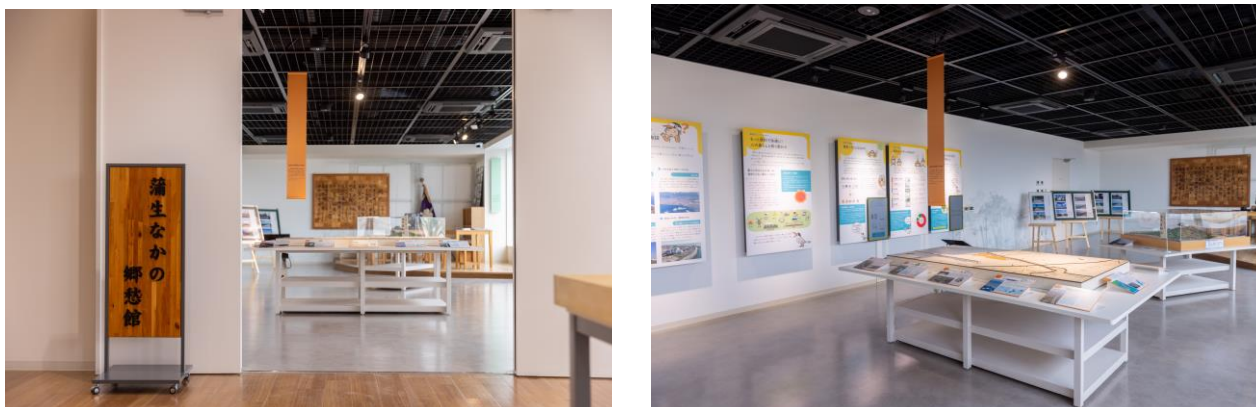


September 9, 2024
RENOVA, Inc.

The Gamo Nakano Kyoshukan on the Premises of the Sendai Gamo Biomass Power Plant Registered as a Disaster Memorial Facility

RENOVA, Inc. announced today that the Gamo Nakano Kyoshukan established on the premises of the Sendai Gamo Biomass Power Plant (Sendai-shi, Miyagi; Installed capacity: 75.0 MW; Notification name: The Morinomiya Biomass Power Plant; hereafter the “Facility”) owned by Morinomiya Biomass Energy G.K. (hereafter “Morinomiya Biomass Energy”), a consolidated subsidiary of RENOVA, Inc., has been registered as a disaster memorial facility**1 that passes down the lessons learned from the Great East Japan Earthquake to future generations.

The Facility is the fifth facility in Sendai-shi to be registered as a category three facility that fulfills all of the requirements for these facilities: they pass down information about the disaster, are easy for people to visit and consider ease of understanding for visitors.



Interior of the Gamo Nakano Kyoshukan



Nakano Densho-no Oka and the Sendai Gamo Biomass Power Plant

The power plant is located in an area where around 80% of the approximately 1,500 houses were either washed away or completely destroyed by the 2011 Great East Japan Earthquake and tsunami. Many people lost their

lives. In constructing the biomass power plant in this area, Morinomiya Biomass Energy engaged in significant dialogue with former residents. In that dialogue, the local people expressed their desire to preserve and pass down the history of the area and make it a place where people who were forced to leave the area due to the disaster can find some measure of healing. The Facility was established in response to this desire.

Guided by the mission, "To create green and sustainable energy systems for a better world," RENOVA, Inc. and Morinomiya Biomass Energy will continue to operate the power plant with safety and harmonious co-existence with the local community as the top priorities, in cooperation with local residents and contributing to the establishment of a decarbonized society.

(*1) Disaster memorial facilities: Facilities related to the Great East Japan Earthquake, including disaster ruins, facilities for passing down facts about the disaster and reconstruction efforts, memorial monuments, and cenotaphs, are registered as disaster memorial facilities for sharing information about the situations that individuals faced or face due to the Great East Japan Earthquake and the lessons learned from the disaster widely across Japan and the world and passing it down to future generations, and other purposes. The facilities are certified and registered by the Disaster Memorial Network Council (administrative organization: Tohoku Regional Development Bureau, Ministry of Land, Infrastructure, Transport and Tourism).

(Reference) <https://www.thr.mlit.go.jp/shinsaidensho/index.html>

[For inquiries about this release, please contact]

RENOVA, Inc. Public Relations

Email: press@renovainc.com